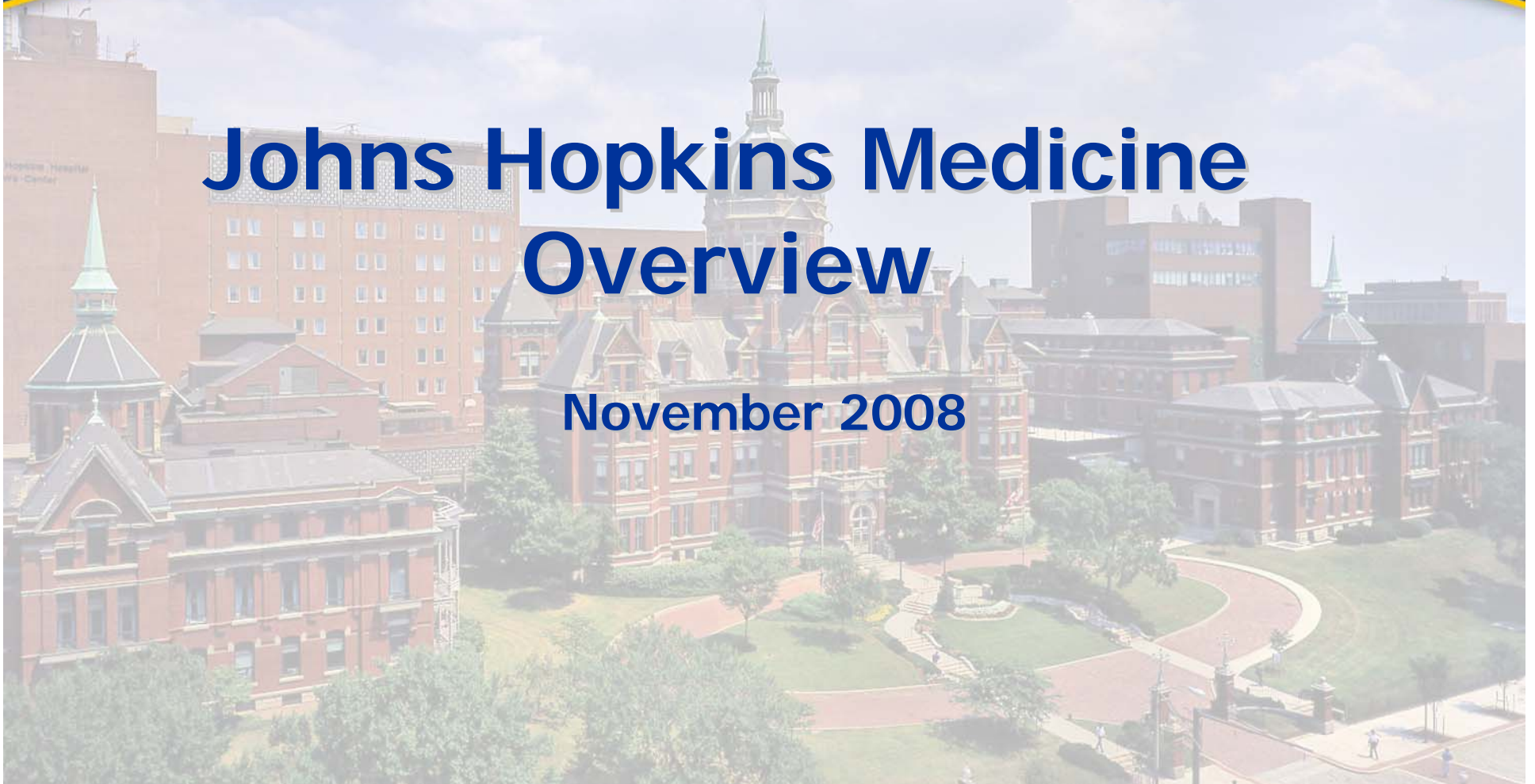




JOHNS HOPKINS
MEDICINE
INTERNATIONAL

Johns Hopkins Medicine Overview

November 2008



School of Medicine Founding Fathers



William H. Welch (pathologist), William S. Halsted (surgeon), William Osler (physician in chief) and Howard A. Kelly (GYN surgeon)

Best of the Best #1 Hospital 18 Consecutive Years

- Rankings

- #1 Otolaryngology, Rheumatology & Urology
- #2 Gynecology, Geriatrics, Neurology/Neurosurgery & Ophthalmology, Psychiatry
- #3 Oncology, Gastroenterology, Cardiology & Heart Surgery, Endocrinology, Pediatrics, & Pulmonary
- #6 Orthopedics, Nephrology
- #15 Rehabilitation

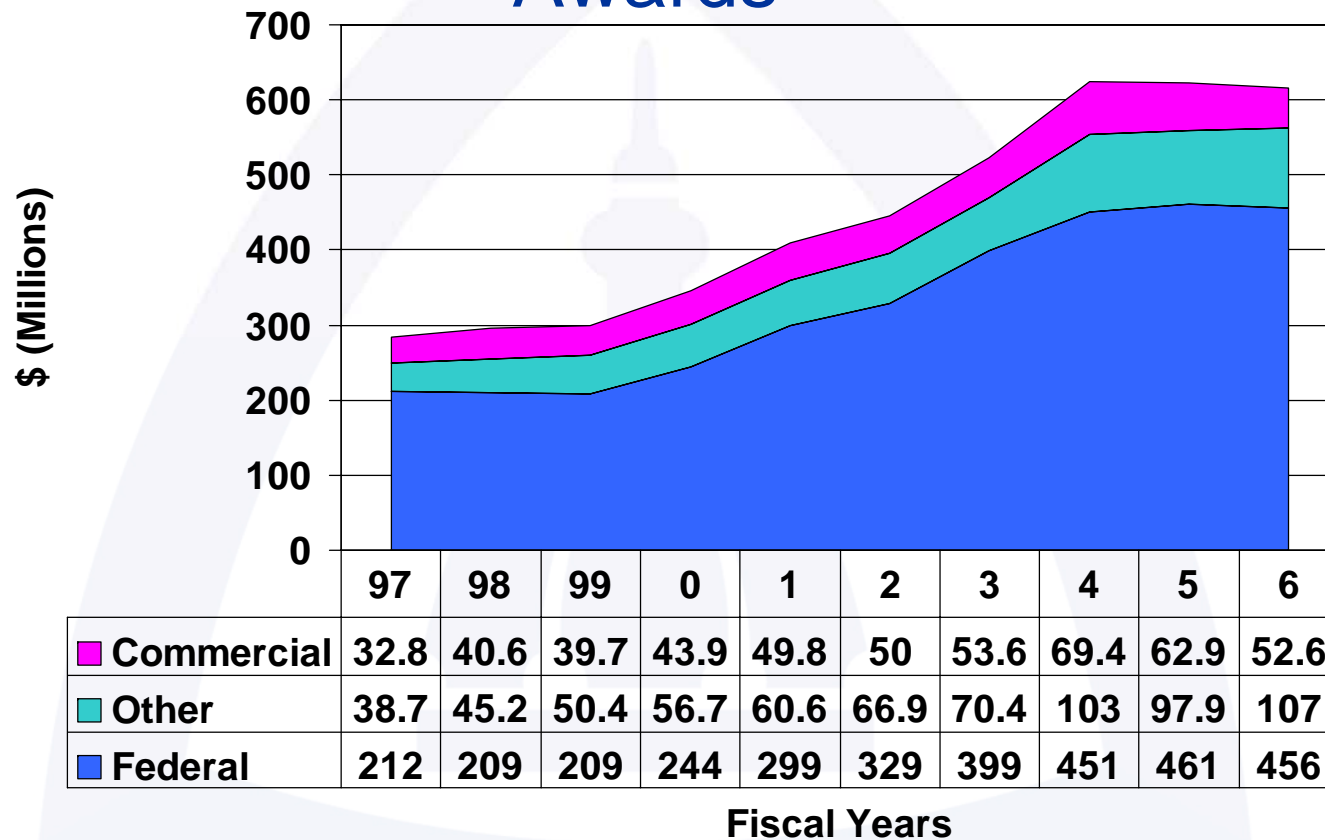


JHM Facts & Figures (FY07)

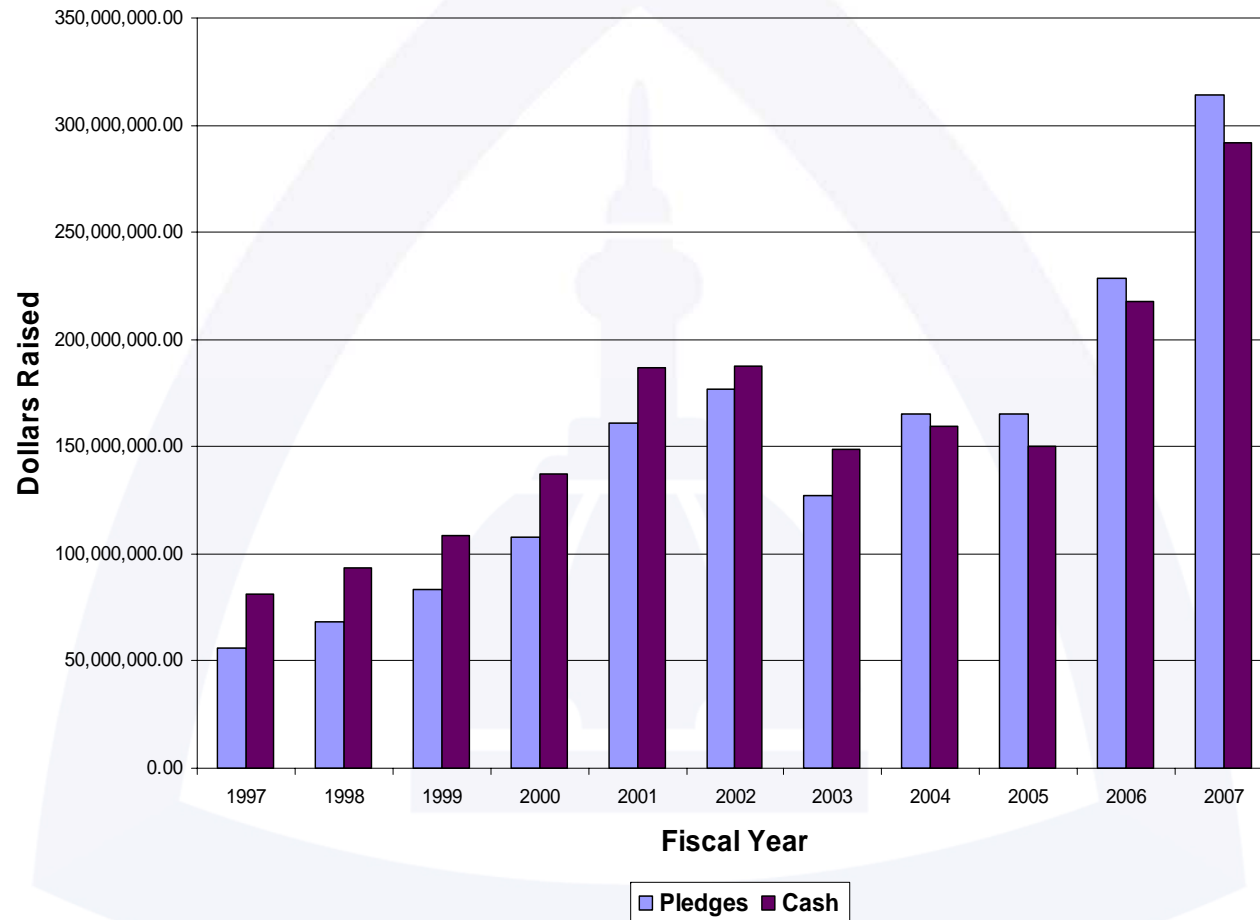
Operating Budget	\$4.1 billion
NIH Research Funding	\$607.2M
Philanthropic Contributions	\$315.1M
Uncompensated Care	\$208.5M
<i>Economic Impact</i>	<i>\$6.4 billion</i>
Medical Staff	4,741
Beds	1,564
Employees	27,751
<i>Patents Filed</i>	<i>243</i>

Sponsored Project Sources

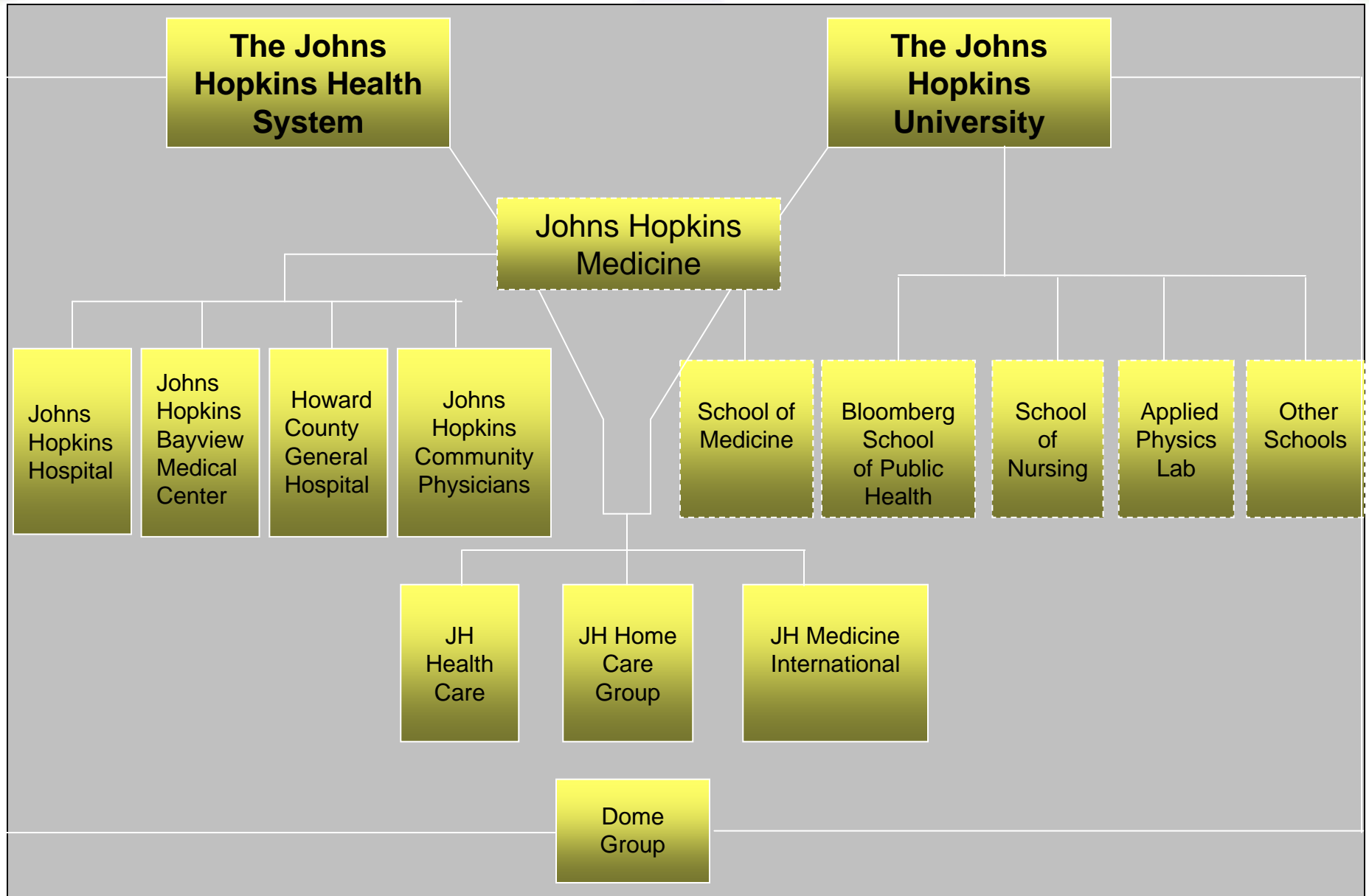
Johns Hopkins School of Medicine – Prorated Awards



Johns Hopkins Medicine 10-Year Giving History



\$4 Billion Integrated Healthcare System



JHM Regional Healthcare Network Development Strategy

- Development of a system of hospitals and large, free standing ambulatory centers (Hubs) that offer high quality care within 30 minute drive of all central Maryland residents.
- Continued development of existing JHM Central Maryland clinical activities onto JHM hospital or Hub campuses.
- Evolve to an integrated patient care delivery system with variety of spokes feeding into the regional JHM hospital-hub network.
- Continue to support mission of JHM by providing teaching locations, research opportunities and a comprehensive clinical network.

JHM Hospitals and Hubs





The New Clinical Building