



# Introduction to the Partners HealthCare

**PARTNERS**<sup>™</sup>  
HEALTHCARE

INTERNATIONAL

Five Harvard Hospitals. One Global Mission.

# Partners HealthCare

- Partners is one of the largest charitable diversified health care services organizations in the United States.
- PHS was established in 1994 by an affiliation between the Brigham and Women's Hospital and the Massachusetts General Hospital, the two largest teaching hospitals affiliated with the Harvard Medical School, in order to create an integrated health care delivery system.

# Partners HealthCare

- Partners is the largest acute and non-acute health care system in New England.
- Partners has the largest non-university-based non-profit private medical research enterprise in the United States and is a principal teaching affiliate of the medical and dental schools of Harvard University.
- Partners has developed a physician network of more than 6,000 primary care physicians and specialists.

# Partners HealthCare Statistics - FY06

## Range of Services

- Acute Care
  - Academic Medical Centers (2)
  - Community Hospitals (6)
  - Dana-Farber/Partners Cancer Care Joint Venture
- Non-Acute Care
  - Mental Health/Psychiatric (1)
  - Long Term Rehabilitation (3)
  - Skilled Nursing
  - Home Care
- Physician/Ambulatory Services
- Research
  - \$1 Billion
- Teaching
  - 4,400 Residents & Clinical & Research Fellows

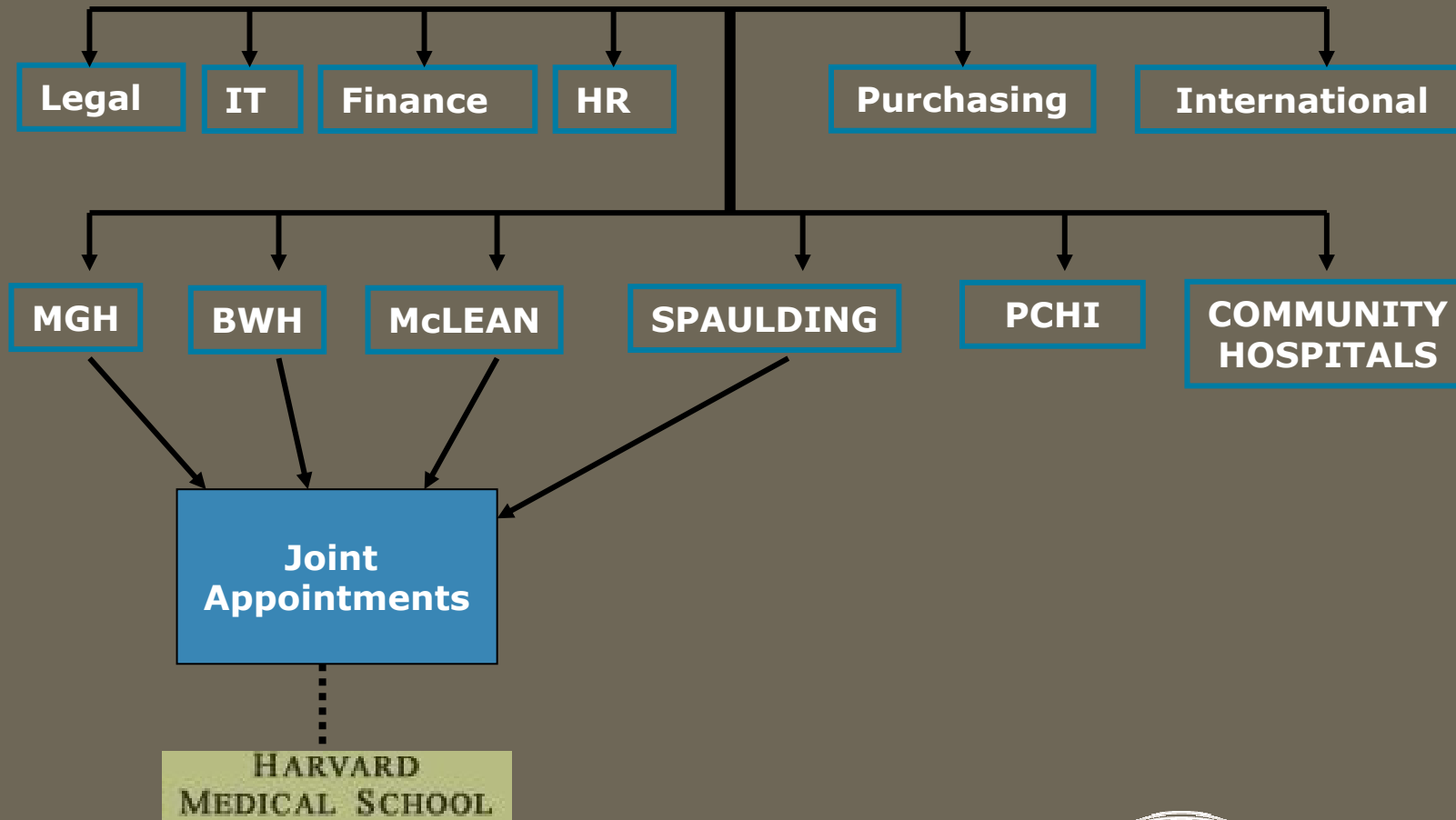
## Key Statistics

- Operating Revenue \$6 Billion
- Licensed Beds 3,500
- Admissions 146,000
- Outpatient Visits <sup>(1)</sup> 2,900,000
- Employees (FTEs) 37,000
- Physicians 6,300

<sup>(1)</sup> Outpatient Visits include ATOs, EDOBs, Day Surgery, Routine Visits, ER Visits, Significant Procedures, Major Imaging, Therapies and Psychiatric Services.

# PHS Functional Relationships

## Partners HealthCare System, Inc



# Partners' Vision

- Improve patient care through overcoming boundaries: professional, institutional, geographic
- Add value through better coordination and teamwork
- Harness the power of information technology to enhance safety, quality, effectiveness and efficiency

# Patient Care

- MGH and BWH are the only two general hospitals in one city to be ranked in the *U.S. News & World Report's* honor roll of top hospitals
- McLean and Spaulding and Dana-Farber Cancer Institute rank among the best in their specialties

# Partners Added Value

## America's Top Ten Best Hospitals 2007

*U.S. News & World Report*

| <u>Medical Center</u>                             | <u>Points*</u> |
|---|----------------|
| <b>1. Partners HealthCare System**</b>            | <b>1,485.8</b> |
| <b>2. Johns Hopkins</b>                           | <b>1,175.0</b> |
| <b>3. Mayo Clinic</b>                             | <b>1,091.1</b> |
| <b>4. Cleveland Clinic</b>                        | <b>814.8</b>   |
| <b>5. UCLA</b>                                    | <b>693.0</b>   |
| <b>6. New-York Presbyterian</b>                   | <b>649.7</b>   |
| <b>7. University of California, San Francisco</b> | <b>585.6</b>   |
| <b>8. Duke University</b>                         | <b>577.0</b>   |
| <b>9. Barnes-Jewish Hospital</b>                  | <b>520.8</b>   |
| <b>10. University of Pittsburgh</b>               | <b>365.9</b>   |

*\*Ranked by Total Points for Each Specialty*

*\*\*Partners Affiliated Institutions include the Brigham and Women's Hospital, the Massachusetts General Hospital, the Dana-Farber Cancer Institute, the McLean Hospital, and the Spaulding Hospital. The Massachusetts Eye and Ear Infirmary provides ENT services for the Massachusetts General Hospital.*

# Dana-Farber / Partners Cancer Center

- 12,000+ new cancer patients each year
- Two campuses:
  - Massachusetts General Hospital Cancer Center
  - Dana-Farber/Brigham and Women's Hospital Cancer Center
- 12 multi-disciplinary programs in adult oncology
- \$500 million research budget
- More than 350 active clinical trials underway

# Education

- Oldest and largest teaching affiliates of Harvard Medical School
- 90% of clinical staff hold faculty appointments at HMS
- 28 residency and 170 fellowship programs
- Over 2,000 trainees
- MGH Institute of Health Professions
  - Degree programs in Nursing, Physical Therapy, Clinical Investigation and Communication Sciences

# Research

- Partners is the largest hospital-based medical research enterprise in the United States. Total combined research budget equals more than \$1 billion in fiscal year 2006. Over 2,300 principal investigators and 1,500 fellows involved in research
- MGH and BWH have ranked first and second in research funding for independent hospitals from the National Institutes of Health (NIH) for twenty two consecutive years. In 2006, Dana-Farber Cancer Institute ranked third.
- Fifteen Nobel Prize winners have worked or trained at Partners hospitals

# Top Ten Recipients of NIH Research Awards - FY06

|     |                                 |                       |
|-----|---------------------------------|-----------------------|
| 1.  | Harvard University              | \$ 1,300,000,000      |
|     | <b>PHS Affiliated Hospitals</b> | <b>\$ 703,000,000</b> |
| 2.  | Johns Hopkins University        | \$ 564,000,000        |
| 3.  | University of Pennsylvania      | \$ 453,000,000        |
| 4.  | University of Washington        | \$ 432,000,000        |
| 5.  | U.C.S.F                         | \$ 407,800,000        |
| 6.  | Duke University                 | \$ 407,500,000        |
| 7.  | University of Michigan          | \$ 391,000,000        |
| 8.  | University of Pittsburgh        | \$ 377,000,000        |
| 9.  | Yale University                 | \$ 336,000,000        |
| 10. | Columbia University             | \$ 323,000,000        |

Source: Office of Extramural Research, NIH

# Intellectual Property Protection: Inventions and Patents in MA

|          | MASSACHUSETTS INSTITUTION             | 2003-2005<br>INVENTION<br>DISCLOSURES | 2003-2005<br>NEW PATENT<br>APPLICATIONS | 2003-2005<br>PATENTS<br>ISSUED |
|----------|---------------------------------------|---------------------------------------|---|--------------------------------|
| 1        | Massachusetts Inst. of Technology     | 1479                                  | 290                                     | 133                            |
| <b>2</b> | <b>Massachusetts General Hospital</b> | <b>717</b>                            | <b>165</b>                              | <b>56</b>                      |
| 3        | Univ. Massachusetts                   | 458                                   | 88                                      | 15                             |
| 4        | Harvard (Univ. + all schools)         | 404                                   | 80                                      | 44                             |
| 5        | Children's Hospital                   | 332                                   | 42                                      | 20                             |
| <b>6</b> | <b>Brigham &amp; Women's Hospital</b> | <b>316</b>                            | <b>47</b>                               | <b>30</b>                      |
| 7        | Boston Univ. + Medical Campus         | 278                                   | 73                                      | 11                             |
| 8        | Beth Israel Deaconess Med Center      | 212                                   | 30                                      | 10                             |
| <b>9</b> | <b>Dana-Farber Cancer Institute</b>   | <b>197</b>                            | <b>36</b>                               | <b>13</b>                      |
| 10       | Tufts Univ. + biomedical campus       | 135                                   | 23                                      | 14                             |

# Center for Integration of Medicine & Innovative Technology

*Mission: To improve patient care by bringing together scientists, engineers and clinicians to catalyze development of innovative technology, emphasizing minimally invasive diagnoses and therapy*

## Collaborations between:

- **Academic Medical Centers**
  - Massachusetts General Hospital
  - Brigham and Women's Hospital
  - Beth Israel Deaconess Medical Center
  - Children's Hospital Boston
  - Newton-Wellesley Hospital
  - Boston Medical Center
- **Engineering / Research Laboratory**
  - Charles Stark Draper Laboratory
- **Universities**
  - Massachusetts Institute of Technology
  - Boston University
  - Harvard Medical School
- **Private Sector Companies**
  - 60+ companies
- **Major Supporters & Collaborators**
  - Partners HealthCare System
  - Department of Defense

# Partners International Medical Services (PIMS)

- **PIMS** develops and manages relationships with physicians, hospitals, businesses and governments that share our belief in the value of international health care collaborations.
- **PIMS** is your gateway to the health care expertise of our teaching hospitals and physicians.

# Partners International Medical Services (PIMS)

- We foster professional interaction by sending our visiting specialists abroad and by inviting foreign doctors to Boston for short-term International Visiting Physician programs.
- We approach patient referral management systematically through “co-patient care” relationships with physicians and leading hospitals around the globe.
- We provide consultative services to international colleagues in designing and implementing clinical services, and in planning new clinical facilities.
- We provide healthcare management services for public and private sector owners of hospitals and health care facilities overseas.
- Through the Partners Center for Connected Health we are able to provide physicians with timely consultations on difficult cases and to conduct tele-education programs.